

Eaton 9395XR UPS

# Eaton 9395XR UPS

## Complete modular data center solution

### Lithium-ion Compatible



Lithium



Energy Aware



Modular 125kW



Efficiency >97%



**EATON**

*Powering Business Worldwide*

# 9395XR Features and Benefits

The Eaton 9395XR UPS combines unprecedented efficiency and reliability with an eye-catching design. A space-saving, scalable and flexible device that's as easy to deploy as it is to manage, it's the perfect three-phase white or grey space solution for today's data center.

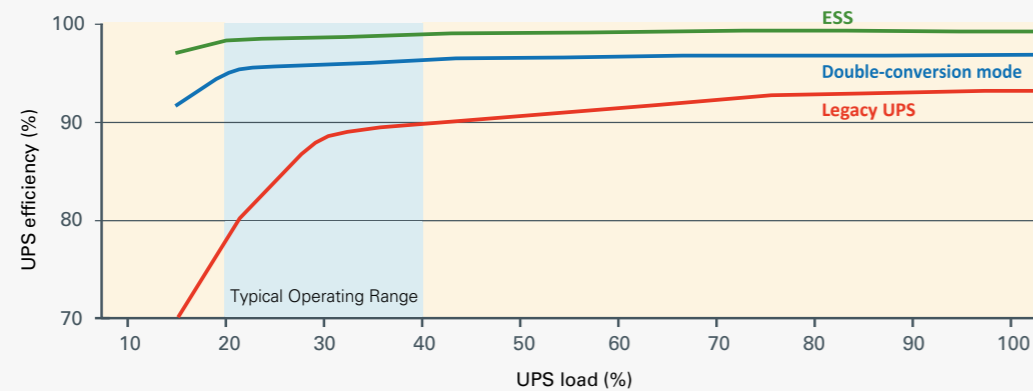


## Extra Low TCO (Total Cost of Ownership)

Conserves valuable data center floor space with its compact footprint and internal redundancy design.  
Reduces cost and unexpected future growth risks with its vertical scalability, enabling you to scale as you grow.  
Reduces power and cooling OPEX through industry-leading energy-efficiency.

- **99% efficiency with Energy Saver System (ESS)**
- **>97%** efficiency in double-conversion mode

The 9395XR's vertical scalability, internal redundancy and compact footprint design



Your UPS cost will be recovered in 3 years' time thanks to the significant energy savings in Eaton ESS/ double conversion efficiency.

Calculate your 9395XR savings with ESS at [Eaton.com/ESS](http://Eaton.com/ESS).

## Designed for Data Center requirements



### Compact Size

1.5MW only takes 1.44m<sup>2</sup> space. Halves the foot print of 93PR 1.2MW. Over 1MW per square meter sets new industry standards.

- A Cable entry**  
Top and bottom cable entry available
- B Communications and connectivity**
  - Built-in device and host USB
  - Five alarm inputs and dedicated EPO
  - Alarm relay output
  - Three connectivity/ communication slots
- C 125kW HOTSWAPPABLE power modules**  
Hot swap UPM could be insert or remove when UPS is running to make sure service continuity.
- D Flexible Exhaust options**  
Support both top and rear exhaust. Could be placed against wall when top exhaust installed.
- E DC start controls**  
Available in each power module
- F Redundancy and speed controllable fans**
- G 7"Color display**





## Next level Ease of service



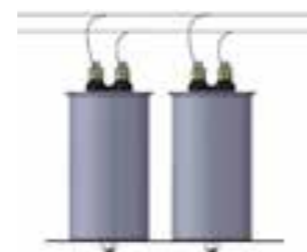
On-line replaceable **UPM** , MTTR as low as 5 mins



Enhanced efficiency and reliability with SIC MOSFET Module



Robust components using **oil-filled capacitors & Full SiC MOSFET** modules



Long life oil-filled capacitor



Perfect integration with Lithium battery, compatible with multiple **Lithium-ion** BMS



**Predict Plus\*** – remote monitoring and predict the failure of power components

## Easy management



Red light bars showing alerts on system. Yellow light bars indicate battery and bypass status.

Provides easier access to detailed status information through its large, user-friendly LCD touchscreen interface

With the 9395XR's graphical LCD interface you can track stats on energy savings, battery time, outage tracking, load profiling and much more.

The green/yellow/red LED light-bars make system status visible from a distance in data centers.

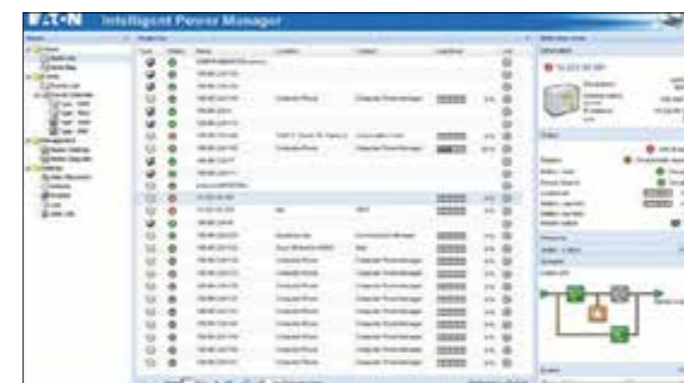
Integrates with the leading virtual platforms through its full suite of power management and connectivity software

Designed for the most advanced IT environments, the 9395XR supports optional communication cards that allow remote access via the HTTP(S), SNMP, MODBUS

TCP/IP, Modbus RTU and BACnet IP protocols. In addition, Eaton's Power Xpert® software and Intelligent Power® Software Suite give you all the tools you need to manage power devices in your physical or virtual environment. Learn more at [Eaton.com/intelligentpower](http://Eaton.com/intelligentpower).

Increases uptime through its 24x7 remote monitoring and reporting capabilities

Eaton's PredictPulse™ remote monitoring and management service provides real-time monitoring of the 9395XR and alerts service technicians to take necessary measures when a problem is detected. Learn more at [Eaton.com/PredictPulse](http://Eaton.com/PredictPulse).



Intelligent Power Manager® (IPM) is a world class power management software platform. It seamlessly monitors power and environmental conditions while providing business continuity for workloads using VMware®, Citrix® and Microsoft® platforms. IPM also optimizes power and environmental conditions for data centers using OpenStack® or HPE OneView®.

### Connectivity options:

- Power Xpert Gateway Minislot UPS Card
- Industrial Relay Card - MS
- Industrial Gateway Card
- Gigabit Network Card (Network-M3)
- SNMP



Connectivity Cards

# Lithium-ion battery

## Power on demand

Eaton's lithium-ion battery systems provide a reliable and flexible solution that ensures 24/7 system uptime while delivering significant total-cost-of-ownership (TCO) savings. Capable of providing mega-watts of power in a small footprint, this battery solution comprises of lightweight battery strings designed to seamlessly connect to a Power Xpert™ 9395XR UPS.

## Why lithium?

Lithium-ion chemistry demonstrates superior characteristics in UPS applications, this results in high energy density, long life, flexible installation, improved cycle life and a lower TCO.

## Backup battery runtimes

Contact Eaton for backup times and configurations. A wide range of runtimes from 3 minutes to an hour + are available.

## EnergyAware upgrade

With Eaton's EnergyAware kits upgrade, UPS with lithium battery can do much more beyond UPS.




## Management and monitoring system

The lithium-ion battery integrates a powerful battery management system (BMS), providing cell protection (temp, current, over/under voltage), cell balancing, state of charge and health and alarms/ reports.

**Protection:** The BMS processes critical parameters such as voltage levels, temperature, and current at the module and solution levels. Abnormal conditions (warnings and alarms) are quickly detected and, if necessary, the BMS will protect the system from damage by disconnecting the affected battery.

**Performance optimization:** The BMS incorporates cell and module balancing controls. This function optimizes the voltages of each module to maximize performance and increase service life.

## Benefits of lithium-ion

<b>Save money</b>	10 year performance warranty 15 year design life	
<b>Save space</b>	up to 8x cycle 40% smaller 60% lighter	
<b>Reduce risk</b>	24/7 BMS monitoring	

### Demand charge management

User avoids demand charges by discharging at peak times.

### Time-of-use optimization

Shifts energy consumption to avoid peak energy usage.

### Demand response

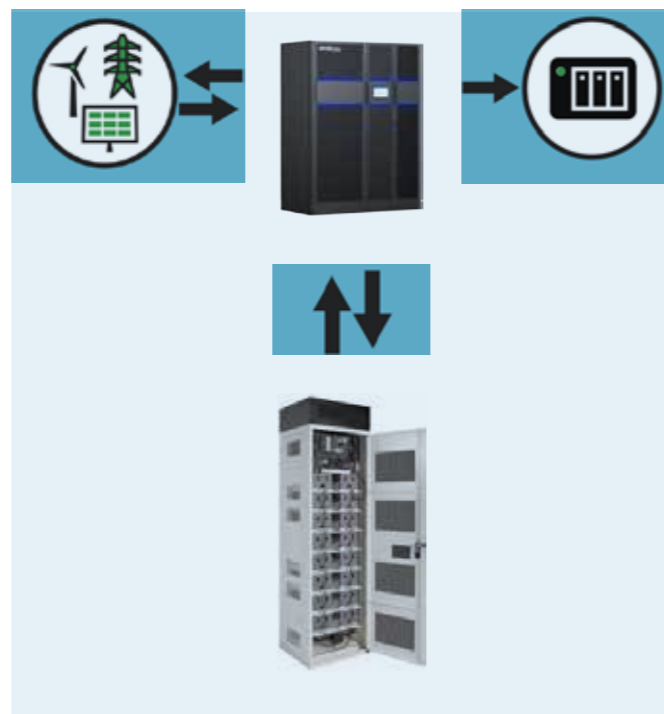
Utility company requests reduction in power usage.

### Frequency regulation

Charge or discharge battery on command to stabilize the grid.

### Aggregation services

Manage multiple assets in a building or campus to work as a single entity.



For more information, please visit  
[Eaton.com/Lithium](http://Eaton.com/Lithium)  
[Eaton.com/EnergyAware](http://Eaton.com/EnergyAware)

# EATON 9395XR UPS TECHNICAL SPECIFICATIONS\*

## Power modules

Power offering (kW)	125kW UPM
---------------------	-----------

## Frame options

Frame Offering	1500 / 1800 / 2500kW
----------------	----------------------

## General characteristics

Efficiency in Energy Saver System (ESS)	Up to 99%
Efficiency in double-conversion mode	>97%
Parallel capability	4 x parallel, maximum 6MW
Cold start	Supported
Softstart	Rectifier ramp up, compatible with generator, ramp up rate configurable

## Input characteristics

Voltage	380/400/415V
Voltage range:	301-478V L-L, 175-276V L-N
Frequency range	50/60 Hz
Power factor	> 0.99
Input current distortion	< 3% @ 100% load capacity

## Battery

Battery Type	Lithium, VRLA, Ni-Cad
Charging method	BMS, ABM or constant float charge
Battery Voltage	400 – 690 Vdc
Battery Connection	Support common battery

## Output

Voltage	380/400/415V 4 Wires, 3 Wires
Frequency range	50/60 Hz
Regulation	±1% steady state
Voltage THD	< 1% (100% linear load), < 3% (non-linear load)
Overload	125% 10 mins

## Certification

Safety	IEC62040-1
EMC	IEC62040-2
Performance	IEC62040-3
Certificate	CE

## Optional accessories

<ul style="list-style-type: none"> <li>• SNMP Card</li> <li>• X-Slot Modbus RTU Card</li> <li>• INDRELAY-MS Card</li> </ul>	<ul style="list-style-type: none"> <li>• Network-M2</li> <li>• INDGW-M2</li> <li>• PXGMSUPS Card</li> </ul>	<ul style="list-style-type: none"> <li>• External Sync Control Box</li> <li>• Lithium battery cabinet</li> <li>• Top exhaust kits</li> </ul>
---	---	--

## UPS dimensions (mm)

	1500kW	1800kW	2500kW
Height	2069	2069	2069
Depth	865 (rear exhaust) 1100 (top exhaust)	865 (rear exhaust) 1100 (top exhaust)	1100 (rear and top exhaust)
Width	1600	2400	3200

## UPM dimensions (mm)

Height	174
Depth	600
Width	598

## Weight (kg)

UPM	55
-----	----

\* Due to continuous improvement, specifications are subject to change without notice.

Eaton, ABM, Intelligent Power Manager, Power Xpert and Predict Pulse are registered trademarks.

All other trademarks are property of their respective owners.

Learn more at  
[Eaton.com/9395XR](http://Eaton.com/9395XR)



**Eaton Electric (Singapore) Pte Ltd**

100G Pasir Panjang Road  
#07-08 Interlocal Centre  
Singapore 118523  
Eaton.com/SG

© 2025 Eaton  
All Rights Reserved  
Printed in Singapore  
BR.E9395XR.SG.0620  
March 2025

Changes to the products, to the information contained in this document, and to prices are reserved; so are errors and omissions. Only order confirmations and technical documentation by Eaton is binding. Photos and pictures also do not warrant a specific layout or functionality. Their use in whatever form is subject to prior approval by Eaton. The same applies to Trademarks (especially Eaton, Moeller, and Cutler-Hammer). The Terms and Conditions of Eaton apply, as referenced on Eaton Internet pages and Eaton order confirmations.

Eaton is a registered trademark of Eaton Corporation.

All other trademarks are property of their respective owners.

Follow us on social media to get the latest product and support information.

